

Date	Feb 15, 2023
------	--------------

**SUBJECT:** Camera Installation  
**PURPOSE:** Integrated Wrecker – Final Installation & Dressout

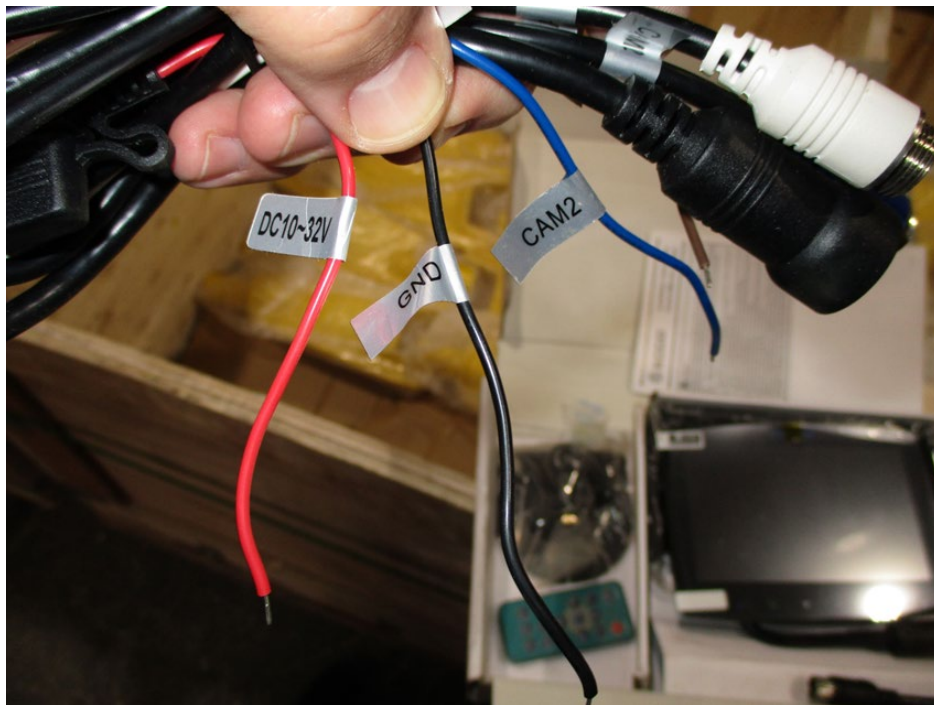
---

## ECCO Camera Install

ECCO camera and harness:

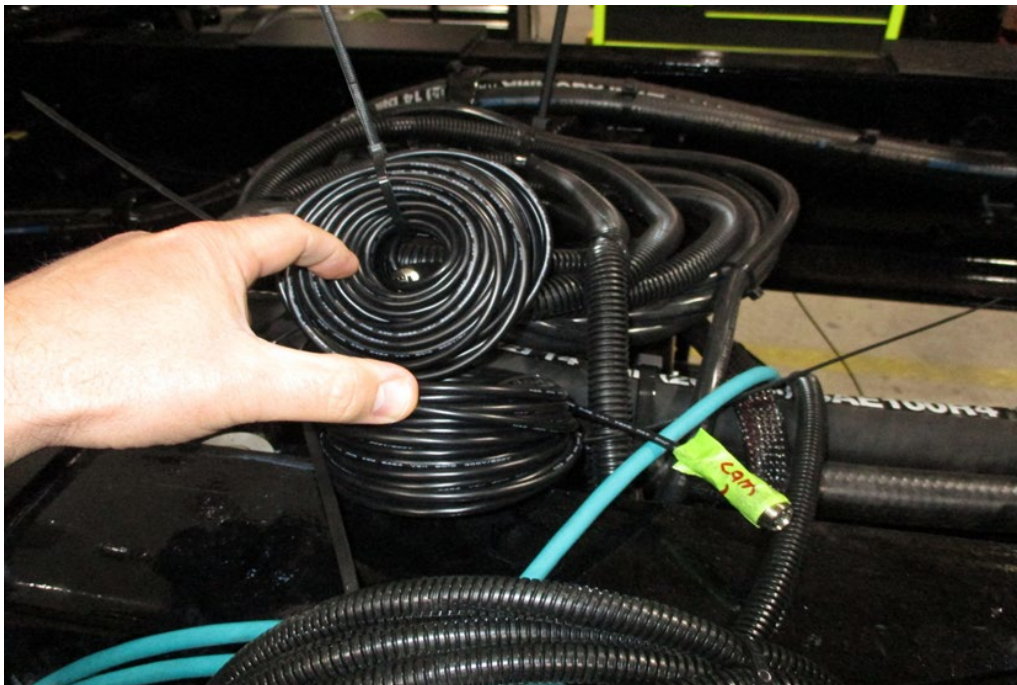


The display harness has (3) camera connections. You will use the CAM 1 (white) and CAM 2 (Blue) for this installation. For the display harness hookup, you will use Red (power) connected to ignition power and the Black is for ground. The Blue wire is reverse activation and will connect to the in-cab harness (part number 03008849) which should be pre-routed and rollup on on the cab firewall. Leave the display harness in the top of the headliner. Extend the Red, Black, and Blue wires down to the gauge cluster area.





Route camera wires from the back of the cab down the frame rail to the firewall of the cab, securing with zip ties. Camera wires are the same length, be sure to label them CAM1 or CAM2 on both ends of the harness for correct connection later. Route camera wires into the cab in the same holes the other harnesses pass into the cab. Route camera wires up the A pillar to plug into the camera display harness.

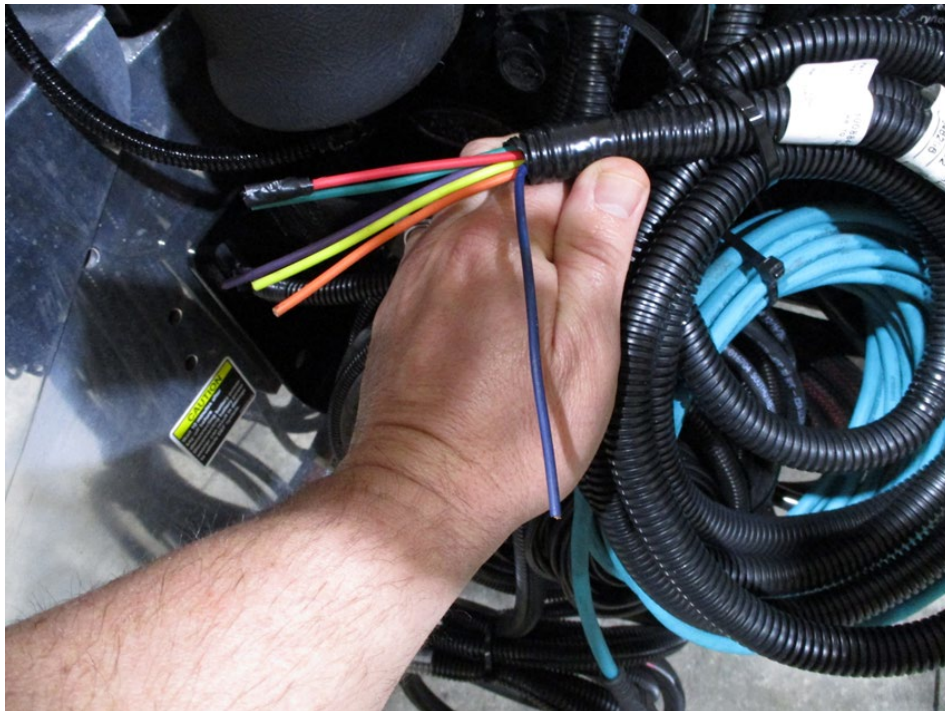


Camera wires secured to chassis factory airlines for routing to the cab:





This is the harness that is rolled up on the firewall and is routed into the cab for connecting. The blue wire on 03008849 is used to butt splice the blue wire on the camera display harness for CAM 2. This will activate the camera when the truck is put into reverse gear.



Depending on the cab your display location may vary. A 7/8 hole will need to be drilled for routing the display wire into the headliner. The Ram mount will also attach to the headliner. This type of truck the display was mounted beside the keypad and is the installers choice.





This is another type of cab that will have a display mounted in the headliner. This display mounts on the passenger side next to the CB radio. A 7/8" hole needs to be drilled to route the display wire into the headliner and to install the Ram mount to the headliner.

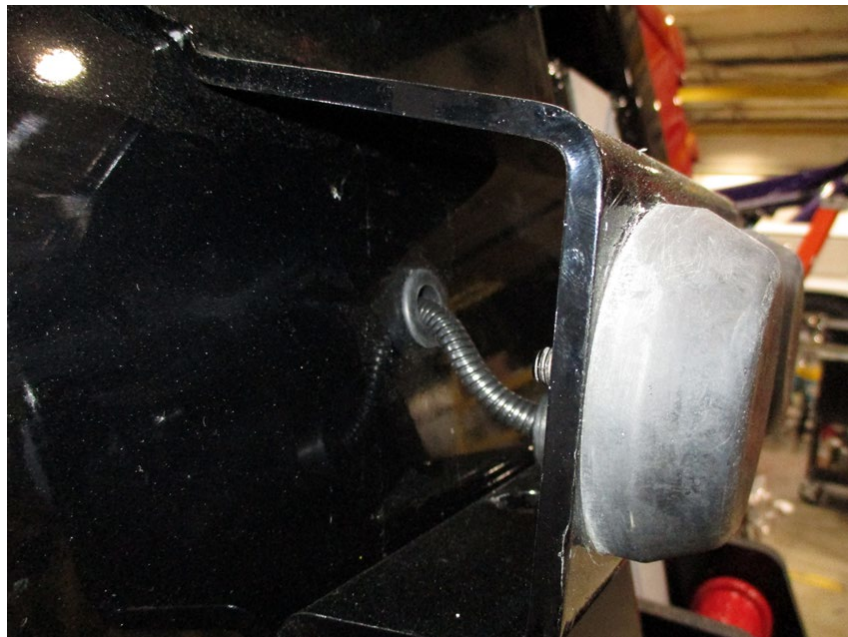


Integrated Camera 2 location (Century units) is at the passenger-side rear. The camera wire that connects to CAM 2 (was rolled up behind the cab) is routed down the passenger side of toolbox to connect to the ECCO camera in tailboard:

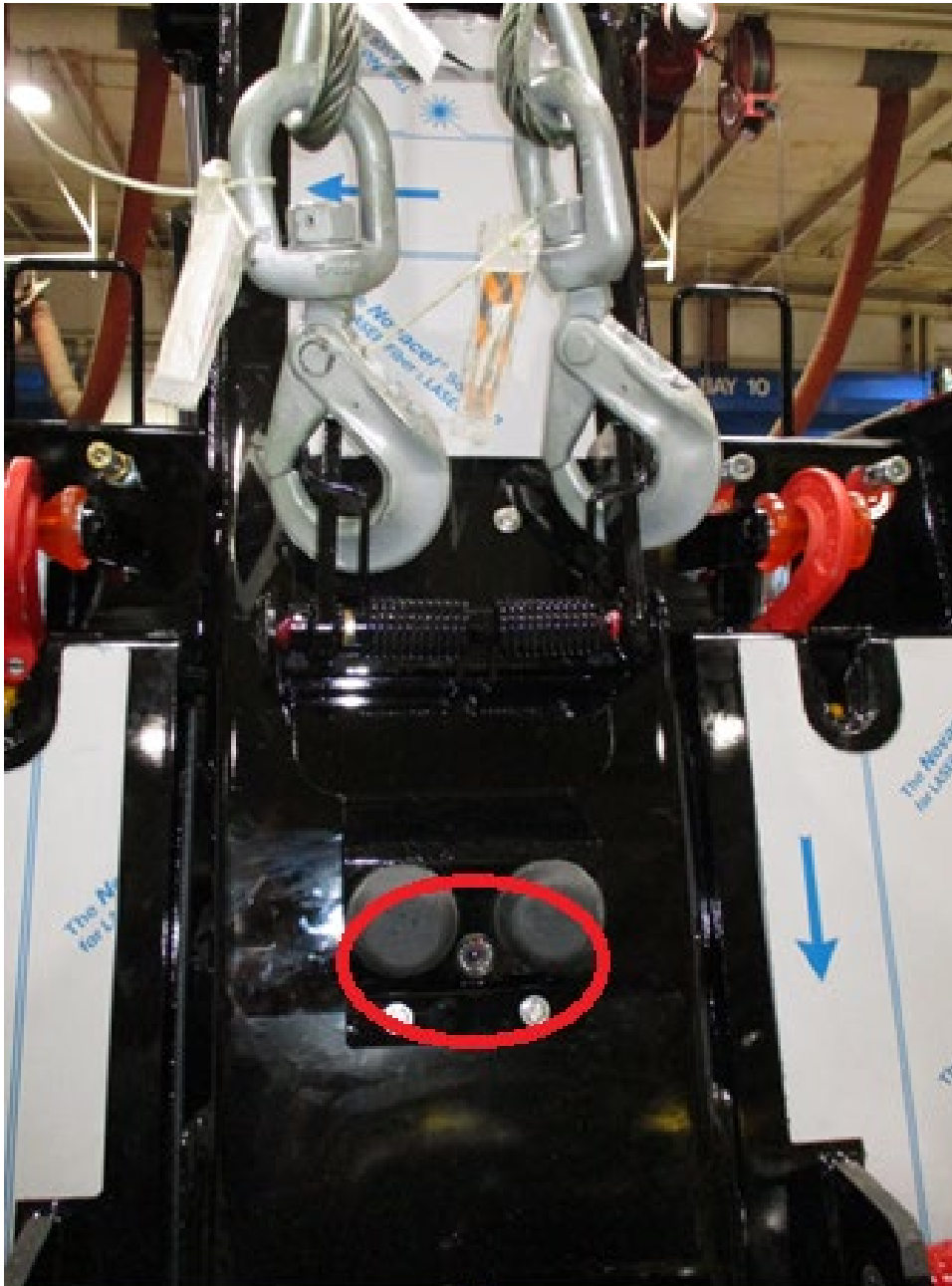




Integrated CAM 1 (Century units) on the tower (Century unit). Route CAM 1 (was rolled up behind cab) down driver-side frame and route camera wire up boom with the underlift wires, securing with zip ties. A 7/8" hole will need to be drilled in the tower behind the cable tie back bracket. After hole is drilled, route the wire down the tower to the drilled hole and install the camera (arrow pointing up) on the cable tie back bracket. Install the cable tie back and connect camera to camera wire. Pull, tie up, and secure any slack and drop in the tower. Ensure that it free of all moving parts to avoid potential damage.



Finished Camera 1 location (Century units):





For Vulcan units, a 28mm holesaw is included in the camera kit box. This is for CAM 1 and CAM 2 locations. This is a critical hole size to properly secure the camera.



Finished Camera 2 location (Vulcan unit). Route CAM 2 wire (was rolled up behind cab) down the passenger toolbox. Come out at the control station and zip tie the harness to hard lines. Route to the camera and tie up any slack when done. Drill 28mm hole size (this hole size is critical to retain the camera properly).





Installation of Camera 1 (Vulcan units.) Route the CAM 1 wire down the driver-side toolbox. Drop out of the toolbox at the control station and route it down to the camera. Secure with zip ties and remove all slack when done to prevent potential damage from moving parts.

